

Sailing Instructions – New Year’s Regatta – January 9, 2021

Created 1-20-2020
Updated 1/1/2021 12:21 PM

1. Rules

- 1.1 The regatta will be governed by the rules as defined in current U.S. Sailing - *The Racing Rules of Sailing*, the Class Rules of the West Florida Performance Handicap Racing Federation (WFPHRF), the Notice of Race (NOR) and these Sailing Instructions (SIs).
- 1.2 The Organizing Authority (OA) is www.gulfcoastsailingclub.org
- 1.3 All US Sailing Prescriptions shall apply.
- 1.4 VHF broadcast on channel 72 per RRS 90.2 (c). Depending on radio traffic other channels may be used in order of priority; 72,69,68,78.
- 1.5 Information received from the RC on any channel shall be considered as being information available to all competitors.
- 1.6 There may or may not be signals made from the pier or ashore.

2. Official Notices

- 2.1 The official notice board is on www.yachtscoring.com [Click Here to Enter New Year’s Cup](#)
- 2.2 The OAs may publish via email addenda to include, but not necessarily limited to, information regarding the following: scratch sheet, skipper contact, ratings being used and class assignments.

3. Changes to Sailing Instructions

- 3.1 Any changes to these SIs or the NOR made before 1800 on the day before racing will be distributed via email.
- 3.2 Any change to the SIs made after 1800 on the day before racing shall be announced by the Race Committee via VHF Channel 72 approximately 30 minutes, and again approximately 15 minutes, before the first warning.

4. Eligibility

- 4.1 This regatta is open to self-righting mono-hull and multi-hull sailing yachts measuring a minimum overall length of twenty (20) feet.
- 4.2 [DP] A WFPHRF rating is required. For those boats without a WFPHRF rating, the OA may assign a rating to be used only for this event.

5. Classes

- 5.1 The boats will be divided into three classes for scoring purposes as follows:
 - 5.1.1 Class I: PHRF Spinnaker
 - 5.1.2 Class II: True Cruising
 - 5.1.3 Class III: Non-Spinnaker
- 5.2 There must be a minimum of three (3) entries in a boat's class in order to have her race results included for Boat Of The Year (BOTY). This requirement does not apply to the scoring and awards for the regatta.
- 5.3 Based on the number for boats competing, class awards will be given to top finisher(s) in PHRF Spinnaker, in PHRF Non-Spinnaker and in True Cruising
- 5.4 If there are insufficient entries for any Class, accepted entries will compete in a similar Class.

6. Signals Made Ashore

- 6.1 There may or may not be signals made from the pier or ashore.

7. Schedule of Races

- 7.1 The Principal Race Officer will run as many around-the-buoy races as conditions will allow.
- 7.2 The Principal Race Officer may or may not run the same number of races for all classes.
- 7.3 The first warning on Saturday, January 9, 2021 is scheduled at 9:55 hrs.
- 7.4 No warning will be made after 1600 hrs.
- 7.5 Flags may or may not be displayed, with no sound signal or announcement by the Principal Race Officer "PRO" via VHF radio, to tell the boats finishing there will be "No more racing today."

8. Racing Area and Course

- 8.1 The racing area will be in the Gulf of Mexico west of the Naples Municipal Pier.
- 8.2 The courses will be announced by VHF.
- 8.3 Due to COVID race committee will consist of:
 - 8.3.1 If the winds are less than 15 knots; 3 people on a center console will set the marks and run administer the races.
 - 8.3.2 If the winds are greater than 15 knots; the PRO may be present on one of the competitor's vessels or at the Naples Pier and run the

races via VHF.

- 8.3.3 Competitors may be asked to help set marks prior to racing.
- 8.4 Government marks or inflatable marks will be used to set the courses.
- 8.5 At five-minute intervals starting 20 minutes prior to the warning signal, the Principal Race Officer may announce the course, bearing, and distance to the first mark for each class.
- 8.6 Marks may be government marks, inflatable balls, cylinders, tetrahedrons, pumpkins or tomatoes.
- 8.7 Turning marks shall be passed leaving them to port or starboard as presented by the PRO, depending on the wind direction.
- 8.8 The starting and finishing marks may be an Orange or Yellow inflatable marks or Orange flag.

9. Starts

- 9.1 If off a Race Committee Boat (RC), the starting line will be between an inflated mark to port of the RC vessel and a staff displaying a blue flag on the RC signal vessel.
- 9.2 If at the Naples Pier, the start will be between the mark furthest west of the Pier and a single Orange flag attached on the Pier. The Offset Mark located 1,000 feet west of the pier <"NP" approximately 26 7.880 N 81 48.647 W> may or may not be part of the starting line but shall always be honored. All boats shall stay West of the Offset mark and shall not enter the area 1,000 feet north or south of the pier.

10. Finish Line

- 10.1 The finishing line will be between (1) an inflatable mark and an orange flag on the Signal Boat or (2) an inflatable mark and a red tomato with the Signal Boat displaying a blue flag, or (3) at the Naples Pier with an orange flag and an inflatable mark.

11. Check-In

- 11.1 Sailboats will check in by hailing the Race Committee on VHF channel 72. The boat name, class entered, sail number, the number of persons on board and other pertinent information is to be submitted.

12. Class / Signal Flags

- 12.1 Class flags and Signal flags may or may not be used at the option of the Principal Race Officer.

13. Starts

- 13.1 The starting order of the classes will be announced by the Principal Race Officer on channel 72, (Non-Spinnaker, True Cruising, Spinnaker). Based on the number of entries in each class, the Principal Race Officer may combine some or all the classes for combined starts throughout the day of racing.
- 13.2 The Principal Race Officer may make a series of 5 each short sounds ten seconds prior to the warning signal for the first of a 5-minute starting sequence.
- 13.3 In a series of starts, the Warning Signal for each succeeding class will be made not less than one minute after the starting signal for the preceding class. The Race Committee may announce, via VHF, the time for each successive Warning Signal.
- 13.4 [DP] Boats whose warning signal has not been made will stay clear of the starting area.
- 13.5 If any part of a boat's hull, crew or equipment is on the course side of the starting line at the start and is identified by the Race Committee may attempt to hail the sail number on VHF channel 72. This changes RRS 29.1. The lack of a hail, the contents of a hail or the timing of the hail shall not be grounds for redress. This changes RRS 62.1(a).

14. Penalty System

- 14.1 [DP] In keeping with the intent of racing, it is expected that skippers honor the US Sailing "Rules of Racing "and that any time a boat has clearly created an infraction, will take appropriate penalty turn(s) as soon as possible once the boat is well clear of other boats.
- 14.2 RRS Appendix V1, Penalty at the Time of An Incident, will apply: The first two sentences of RRS 44.1 are changed to: A boat may take a One-Turn Penalty when she may have broken one or more rules of Part 2 or rule 31 in an incident while racing. However, when a skipper may have broken one or more rules of Part 2 while in the zone around a mark other than a starting mark, the penalty shall be a Two-Turn Penalty.
- 14.3 RRS Appendix V2 Penalty Taken After A Race, will apply and is changed to: "After a race, a boat that may have broken one or more rules of Part 2 or RRS 31 in an incident while racing may take a Post-Race Penalty for that incident. A boat takes the penalty by delivering a written notice to the Principal Race Officer or by sending an email to fbrown13@yahoo.com

954-648-5838 C Fleet Commander, that identifies the race number and when and where the incident occurred. The penalty shall be calculated as stated in RRS 44.3(c). The notice must be delivered at least fifteen (15) minutes prior to the boat's protest time limit.

15. Time Limits

- 15.1 [DP][NP] A boat that is retiring from a race must notify the Race Committee by VHF radio channel 72 or by calling cell telephone # (609-226-4310).
- 15.2 The Race Committee may assign a finish position to any boat that has not finished, provided that the boat's position can be determined in a reasonable manner. A boat whose finishing position has been so established will be notified by VHF radio channel 72. When another race is to be run, the assigned finish boat(s) are to return immediately to the starting area. Finishes assigned in this manner will not be subject to redress. This changes RRS 62.1(a).

16. Scoring Inquiries, Protests and Requests for Redress

- 16.1 [DP][NP] Boats intending to protest, or request redress should as a courtesy to notify the Race Committee on VHF channel 72 or call cell phone #609-226-4310.
- 16.2 Any of the referenced forms under this section are to be submitted to the Race Committee or Protest Committee or can be emailed to tcoble@aol.com.
- 16.3 A boat requesting clarification about the Report of the Race Committee must submit a Scoring Inquiry Form (found on <https://www.ussailing.org/competition/rules-officiating/race-officers/materials-for-race-officers/forms-diagrams-equipment/>) within the protest time limit and go through the scoring inquiry process prior to filing a request for redress. A boat requesting clarification about her score(s), based on posted results must submit a Scoring Inquiry Form as soon as reasonably possible after learning of the posting and go through the scoring inquiry process prior to filing a request for redress. If after going through the scoring inquiry process, the competitor wishes to file for redress, the request must be delivered as soon as reasonably possible after learning of the outcome of the scoring inquiry hearing.
- 16.4 Protests, requests for redress or requests for reopening a hearing shall be delivered in writing to the Race Committee within the appropriate time

and may be sent by text to the Race Committee at _609-226-4310 within the protest period. The protest form is available on

<https://www.ussailing.org/competition/rules-officiating/race-officers/materials-for-race-officers/forms-diagrams-equipment/>. The US

Sailing "Protest Form" is not required provided that the following information is included: (1) boat protesting and boat(s) protested, (2) where and when incident occurred and (3) description of the incident.

16.5 The protest time limit and the time limit for requesting redress based on an incident that occurred in the racing area is 90 minutes after the last boat has finished the last race for the day.

16.6 The Protest Committee shall attempt to notify competitors by posting a notice on Swflsail.com or via email that a protest or request for redress has been filed. The Protest Committee shall inform competitors of hearings in which they are parties or named as witnesses. Hearings will be held at a time and place agreeable to all parties.

17. Scoring

17.1 WFPHRF time on distance for will be used.

18. Safety Regulations

18.1 [DP] A boat that withdraws from racing for the day shall notify the Race Committee as soon as possible via VHF 72, via email (tcobell@aol.com) or by texting PRO's cell phone (_609-226-4310).

19. Trash Disposal

19.1 [DP] Trash shall not be thrown overboard.

20. Radio Communication

20.1 [DP][NP] All boats must be equipped with a working VHF radio, either fixed or handheld capable of receiving and sending on VHF channels 16 and 72. The Race Committee will monitor and broadcast information on channel 72.







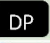


21. Prizes

21.1 Awards for a class with three to four boats registered will be limited to a first-place award.

21.2 Awards for a class with five boats registered will be limited to awards for first and second place.

21.3 Awards for a class with more than six boats registered will be limited to awards for first, second and third place.

From	To	Distance <miles>	Bearing <degrees>
DP	NP	3.0	173/353
DP	GP	5.7	178/358
DP	A	2	270/90
DP	B	3.5	209/29
DP	C	6.0	194/14
NP	GP	2.8	184/4
NP	A	3.7	321/141
NP	B	2	270/90
NP	C	3.4	215/35
GP	A	6.1	339/159
GP	B	3.4	326/146
GP	C	1.6	270/90
C	B	2.8	355/175
C	A	5.7	355/175
A	B	3.0	174/354

Shape	Meaning
	Course marks
	Inflatable or fender
	
	Gov't Mark - do not round
	Gov't Mark - do not round
	Approx. GPS coordinates <ul style="list-style-type: none"> • May be a virtual mark • May be inflatable mark or fender • May be rounded
	Channel entrance – may be rounded
	Starting Pin
	Fender Tomatoes 18" to 48"

 Windward Mark

Reaching Mark 

Starting Pin
and
Leeward Mark



Starting Line

Finish Line




Race Committee
Blue Flag

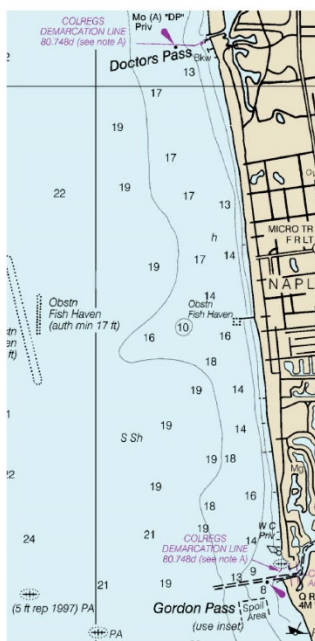
“A”
2 miles west of DP
LAT 26 10.391 N
LON -81 50.925 W



“B”
2 miles west of NP
LAT 26 7.880 N
LON -81 50.631 W



“C”
2 miles west of GP #2
LAT 26 5.434 N
LON -81 50.402 W



Doctors Pass “DP”
LAT 26 10.391 N
LON -81 49.029 W



Naples Pier “NP”
LAT 26 7.880 N
LON -81 48.647 W



Gordon Pass “GP”
LAT 26 5.434 N
LON -81 48.833 W



Disclaimer of Liability

Sailing is an activity that has an inherent risk of damage and injury. Competitors in this event are participating entirely at their own risk. See RRS 4, Decision to Race. The race organizers (the organizing Authority, race committee, protest committee, host club, sponsors, or any other organization or official) will not be responsible for damage to any boat or other property or the injury to any competitor, including death, Sustained as a result of participation in this event. By participating in this event, each competitor, or in the case of minors, each competitor’s parent or guardian agrees to release the race organizers from any and all liability associated with such competitor’s participation in this event to the fullest extent permitted by law.

Note: The notation “[DP]” in a rule in this Sailing Instructions means that the penalty for a breach of that rule may, at the discretion of the Protest Committee, be less than disqualification. The notation “[NP]” in a rule in this Sailing Instructions designates that a boat may not protest a boat for an alleged breach of that instruction. This changes RRS 60.1(a).